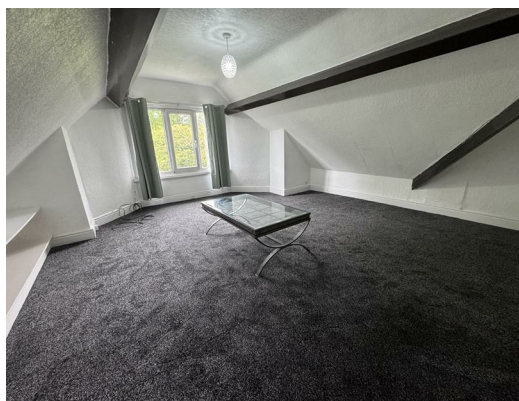




Flat 3, 128 - 130 Bingley Road, Shipley, West Yorkshire, BD18 4HA
£695 Per Calendar Month

HamiltonBower are pleased to offer to let this 2nd floor one bedroom flat located close to the popular residential area of Saltaire with its wide range of amenities and transport links easily accessible. The residence offers spacious room sizes, modern kitchen and bathroom, electric storage heaters and off street parking. The flat forms part of an imposing Victorian property with impressive established gardens.



LOUNGE

KITCHEN

BEDROOM

BATHROOM

EXTERNAL

The building has a paved area to the side providing a pleasant place to sit and enjoy the outside space with a barbeque area.

COUNCIL TAX BAND - B

EPC RATING - E

